

PMM PMM-Q



MERO®

PMM

Descrizione: I ventilatori serie **PMM** sono particolarmente indicati per l'aspirazione di vapori, aria corrosiva anche polverosa (non abrasiva).

Campo di lavoro: Sino a 3900 m³/h, pressioni medio-alte, rendimento elevato.

Temperatura del fluido: Fino a 60° C in esecuzione **standard** in polietene; **S** in polipropilene per temperature sino a 80° C.

Caratteristiche Costruttive: Coclea completamente stampata senza saldature in materiali: **PP - PPS - PPEI - PE - PEs - PEel** (Vedi legenda a pagina 6), girante a pale avanti equilibrata staticamente e dinamicamente, completamente stampata **PP - PPs - PVDF**, supporto motore in lamiera di acciaio con verniciatura o in acciaio inox e l'installazione di un motore elettrico forma B5 in esecuzione 5.

A richiesta: Sono disponibili esecuzioni in conformità alla direttiva ATEX 

Accessorio: Supporto motore in acciaio inox.

Description: **PMM** series fans are particularly designed to extract vapors and corrosive air even if dusty (not abrasive).

Field of application: Up to 3900 m³/h, medium-high pressures, high performance.

Fluid temperature: Up to 60° C in **standard** execution in polyethylene; **S** in polypropylene for temperatures up to 80° C.

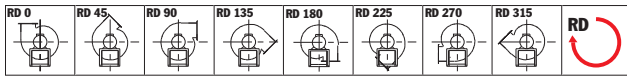
Constructive characteristics: The execution previews the use of housing completely moulded without welding in materials: **PE - PEel - PP - PPS - PPEI** (see legend at page 6), backward blades impeller moulded in material **PP - PPs - PVDF** statically and dynamically balanced and the installation of 2 or 4 poles electric motor - B5 for execution 5.

On request: versions according to ATEX directive are available 

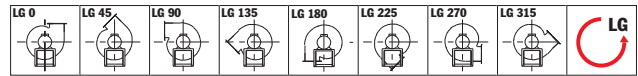
Accessory: Motor support made of stainless steel



Direzioni di rotazione (vista lato motore) - Rotation senses (seen from motor side)

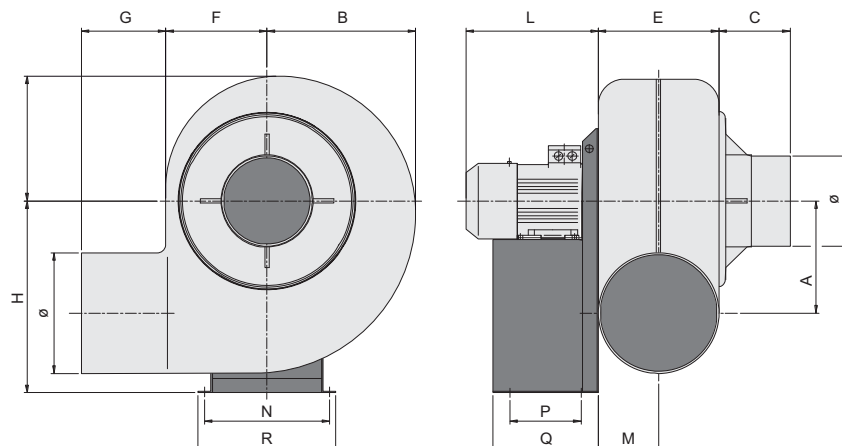


Rotazione oraria - Clockwise rotation sense



Rotazione anti-oraria - Anti-Clockwise rotation sense

DIMENSIONI E PESI DIMENSIONS AND WEIGHTS



DIMENSIONI E PESI

DIMENSIONS AND WEIGHTS

kg*: Peso del ventilatore completo di motore standard - kg*: Fan weight with standard electric motor
 kg**: Peso del ventilatore completo di motore EExd - kg**: Fan weight with EExd electric motor

TIPO - TYPE		kW inst.	GIRI rpm	VENTILATORE FAN																PESO Weight	
VENTILATORE FAN	MOTORE MOTOR			kgf	A	B	C	Ø	E	F	G	H	I	L	M	N	P	Q	R	S	kg*
PMM 204	63	0,12	1400	142	187	40	125	108	150	60	250	165	183	74	200	100	140	235	11	9	17
PMM 202	63	0,25	2850										183							10	18
PMM 254	63	0,18	1400	183	225	40	160	140	170	80	310	210	183	90	255	100	140	290	11	13	21
PMM 252	80	0,75	2850										225							17	28
PMM 284	63	0,18	1450	208	255	40	180	150	185	80	350	230	183	110	277	120	190	320	11	16	24
PMM 282	80	1,1	2850										225							20	31
PMM 316	63	0,12	900	240	275	40	200	155	205	80	410	245	183	117	320	150	230	355	11	20	28
PMM 314	71	0,25	1450										205							24	33
PMM 312	80	1,50	2850										260							31	44
PMM 406	71	0,25	900										205							28	34
PMM 404	80	0,75	1450										225							31	41
PMM 402	112	4	2850	290	380	40	250	185	260	80	495	330	325	135	330	170	250	370	11	47	63
PMM 403	112	5,5	2850										365							47	72

CARATTERISTICHE IN MANDATA VENTILATORI SERIE "PMM"

OUTLET CHARACTERISTICS OF FANS "PMM" SERIES

MOTORI A 2/4/6 POLI - 2/4/6 POLES MOTORS

TIPO - TYPE		KW inst.	Poli Poles	dB(A)	HT	Qv m³/h															
VENTILATORE FAN	MOTORE MOTOR					100	150	200	300	400	600	800	1000	1300	1600	2000	2400	3000	3900		
PMM 202	63	0,25	2	69		67	67	66	60	53											
PMM 204	63	0,12	4	53		17	16	15	10												
PMM 252	80	0,75	2	75				110	110	108	97	87	68								
PMM 254	63	0,18	4	59		28	28	27	25	22											
PMM 282	80	1,1	2	79				130	130	130	120	115	95								
PMM 284	63	0,18	4	63			35	35	34	32	27	22									
PMM 312	80	1,5	2	81				168	168	168	169	169	168	165	130						
PMM 314	71	0,25	4	66				44	44	45	45	43	38								
PMM 316	71	0,12	6	60			17	17	18	18	16	14									
PMM 402/403	112	4/5,5	2	87						250	250	250	255	260	260	258	258	250	230		
PMM 404	80	0,75	4	70						66	67	68	68	67	66	59					
PMM 406	71	0,25	6	65					25	26	27	27	25								

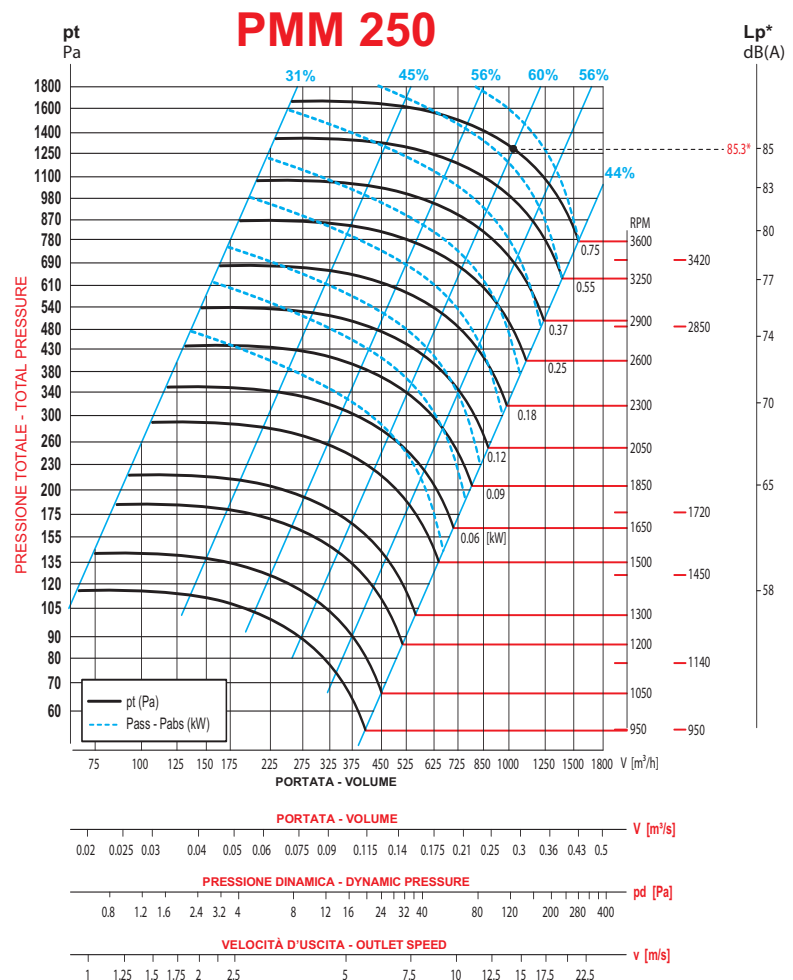
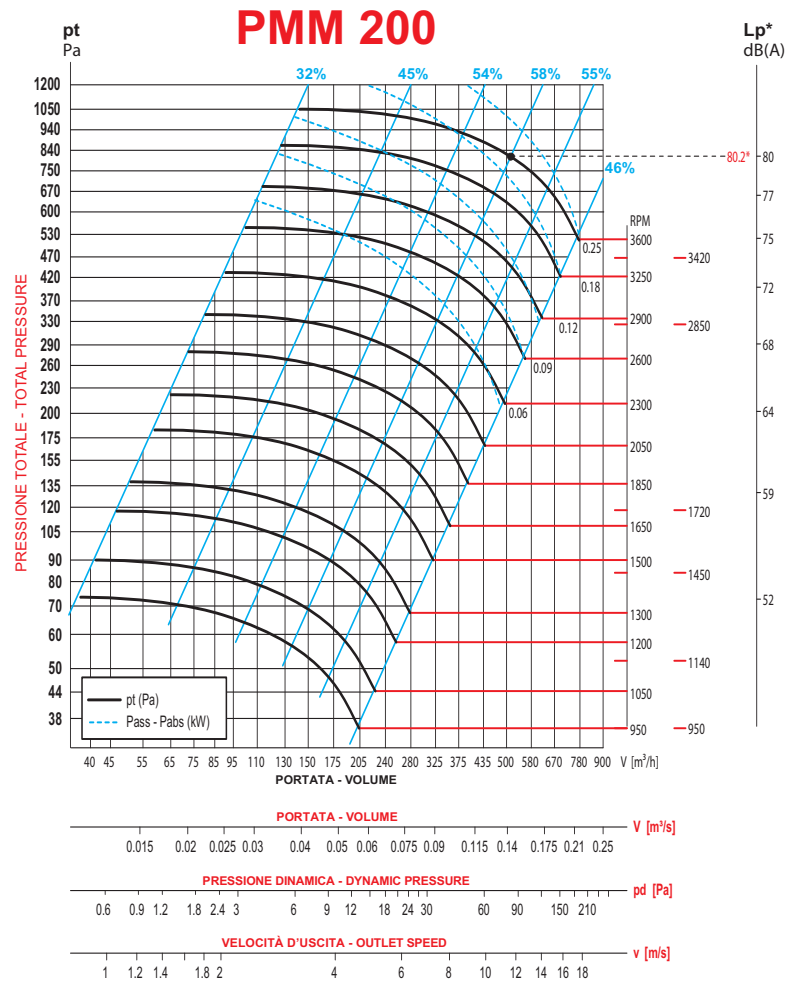
TOLLERANZA SULLA PORTATA ±5% - LOAD TOLERANCE ±5%
 TOLLERANZA SULLA RUMOROSITÀ +3 dB(A) - NOISE TOLERANCE +3 dB(A)

pt mmH2O= da Pa

Valori riferiti a: / Datas referring to: T=15°C; P=1 atm

PMM

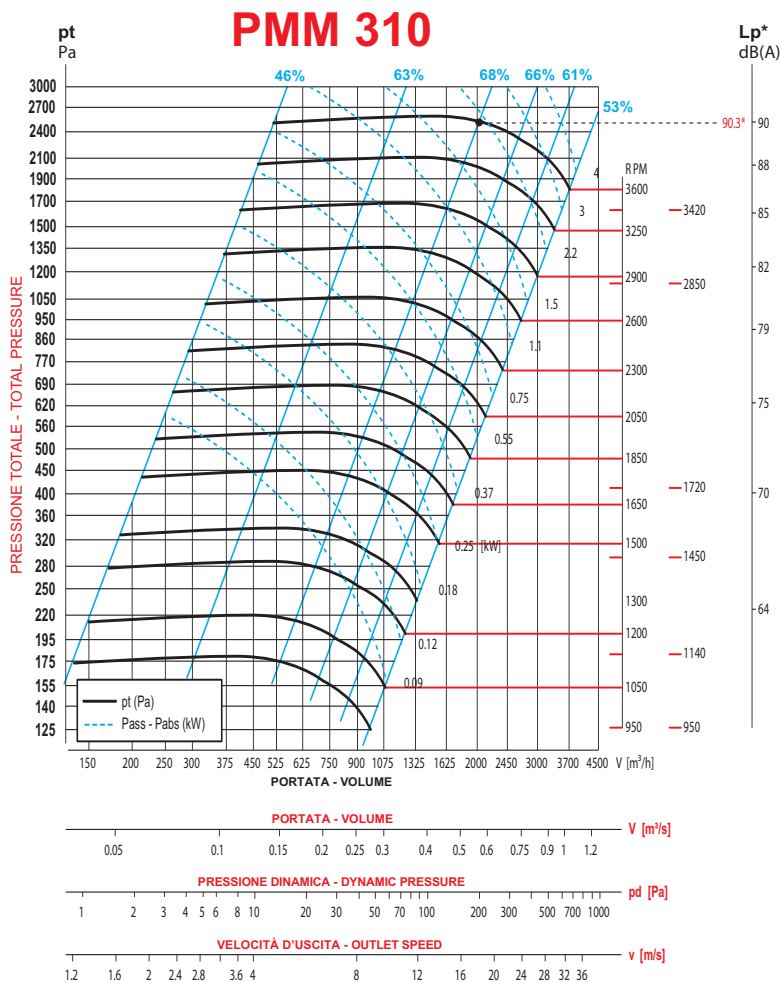
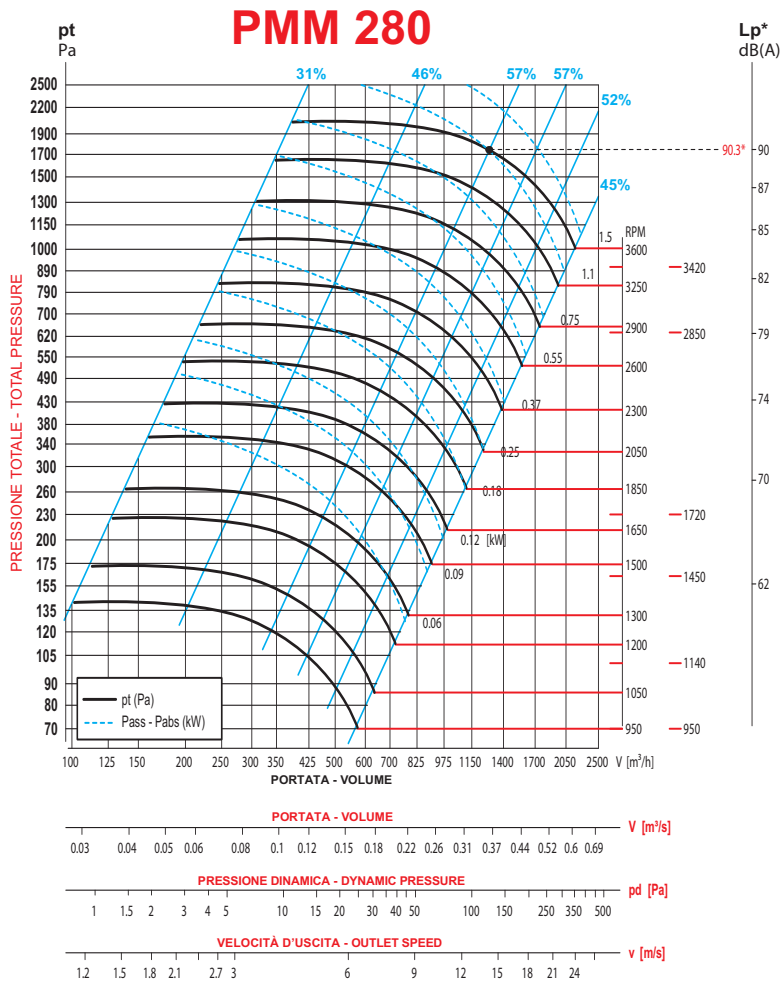
PRESTAZIONI PERFORMANCES



PMM

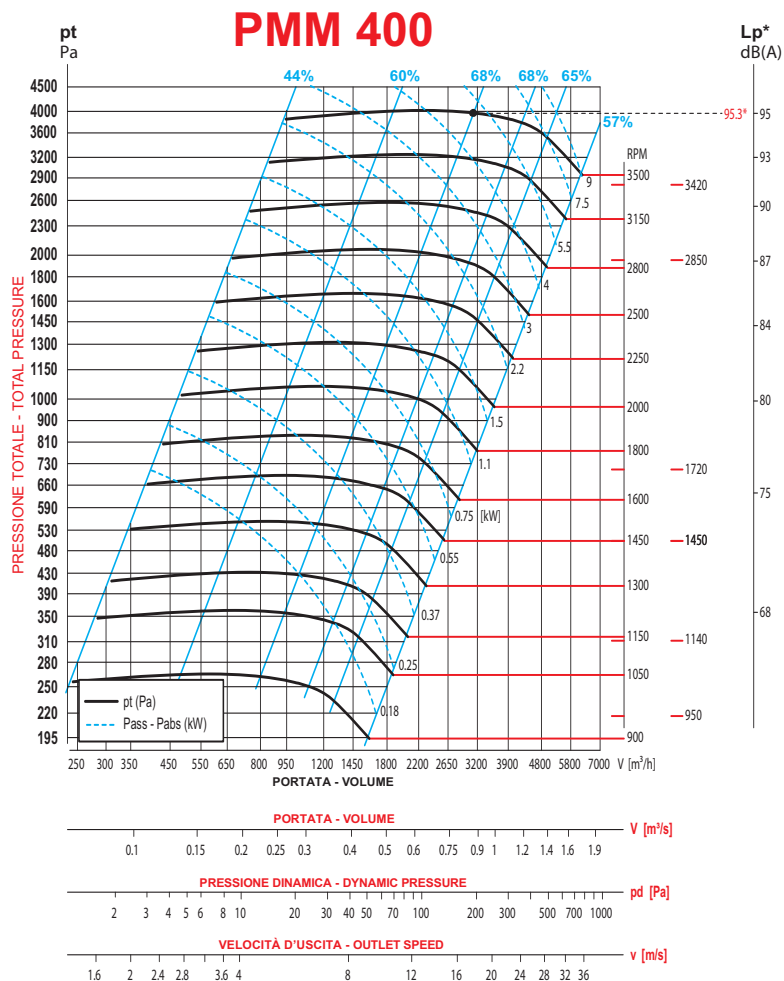
PRESTAZIONI

PERFORMANCES



PMM

PRESTAZIONI PERFORMANCES



maflo®


PMM-Q

Descrizione: I ventilatori serie **PMM-Q** sono particolarmente indicati per l'aspirazione di vapori, aria corrosiva anche polverosa (non abrasiva).

Campo di lavoro: Sino a 20.000 m³/h, pressioni medio-alte, rendimento elevato.

Temperatura del fluido: Fino a 60° C in esecuzione **standard** in polietene; **S** in polipropilene per temperature sino a 80° C.

Caratteristiche Costruttive: Coclea costruita in materiali: **PP - PPS - PPEl - PE - PEs - PEel** (Vedi legenda a pagina 6), girante a pale avanti equilibrata staticamente e dinamicamente, stampata **PP - PPs - PVDF**, supporto motore in lamiera di acciaio con verniciatura e l'installazione di un motore elettrico forma B5 in esecuzione 5.


A richiesta: Sono disponibili esecuzioni in conformità alla direttiva ATEX 

Description: *PMM-Q series fans are particularly designed to extract vapors and corrosive air even if dusty (not abrasive).*

Field of application: : Up to 20.000 m³/h, medium-high pressures, high performance.

Fluid temperature: Up to 60° C in **standard** execution in polyethene; **S** in polypropylene for temperatures up to 80° C.

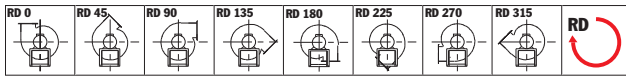
Constructive characteristics: The execution previews the use of housing manufactured in materials: **PE - PEel - PP - PPS - PPEl** (see legend at page 6), forward curved blades impeller moulded in material **PP - PPs - PVDF** statically and dynamically balanced and the installation of 2 or 4 poles electric motor – B5 for execution 5.

On request: versions according to ATEX directive are available 

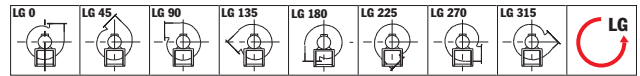
Accessory: Motor support made of stainless steel



Direzioni di rotazione (vista lato motore) - Rotation senses (seen from motor side)

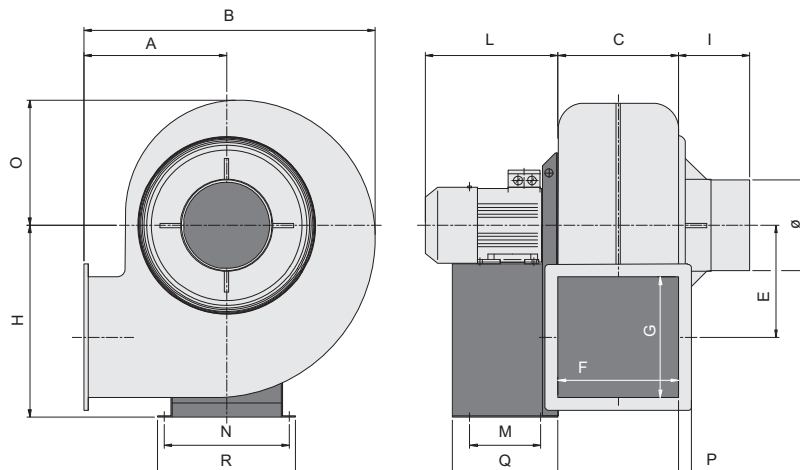


Rotazione oraria - Clockwise rotation sense



Rotazione anti-oraria - Anti-Clockwise rotation sense

DIMENSIONI E PESI DIMENSIONS AND WEIGHTS



DIMENSIONI E PESI

DIMENSIONS AND WEIGHTS

kg*: Peso del ventilatore completo di motore standard - kg*: Fan weight with standard electric motor

TIPO - TYPE		kW inst.	GIRI rpm	VENTILATORE FAN															PESO Weight	
VENTILATORE FAN	MOTORE MOTOR			kgf	A	B	C	Ø	E	F	G	H	I	L	M	N	O	P	Q	R
PMM-Q 352	90	2,2	2850	271	598	175	225	275	165	220	445	50	270	150	350	285	40	230	385	9
PMM-Q 354	71	0,37	1400							222			210							10
PMM-Q 452	132	9	2850	340	722	220	280	292	200	300	550	50	480	170	370	350	40	250	410	9
PMM-Q 454	90	1,5	1450										260							10
PMM-Q 504	100	2,2	1450	400	890	270	315	377	250	366	630	50	355	197	290	395	50	275	340	9
PMM-Q 506	90	0,75	900										320							10
PMM-Q 564	132	5,5	1450	438	998	320	400	416	300	466	710	50	480	237	289	445	50	315	340	9
PMM-Q 566	112	2,2	900										380							10
PMM-Q 634	132	7,5	1450	468	1041	340	450	406	320	462	800	50	480	237	337	492	50	315	390	9
PMM-Q 636	132	3	900										480							10
PMM-Q 704	160	11	1450	500	1190	430	500	527	400	490	850	50	550	316	772	571	50	400	836	47
PMM-Q 804	200	30	1450	540	1300	480	560	591	450	550	950	50	640	360	862	640	50	440	940	47

CARATTERISTICHE IN MANDATA VENTILATORI SERIE "PMM-Q"

OUTLET CHARACTERISTICS OF FANS "PMM-Q" SERIES

MOTORI A 2/4/6 POLI - 2/4/6 POLES MOTORS

TIPO - TYPE		KW inst.	Poli Poles	dB(A)	HT	Qv m³/h																
VENTILATORE FAN	MOTORE MOTOR					300	600	900	1300	1800	2400	3000	4000	5000	6000	7000	8000	10000	12000	14000	17000	20000
PMM-Q 352	90	2,2	2	84		185	195	200	200	195	189	180										
PMM-Q 354	71	0,37	4	70		52	52	51	48	40												
PMM-Q 452	132	9	2	91				316	320	330	335	350	335	320	317							
PMM-Q 454	90	1,5	4	75			90	91	92	90	88	84										
PMM-Q 504	100	2,2	4	78				105	107	108	108	105	98									
PMM-Q 506	90	0,75	6	68			44	45	45	45	42											
PMM-Q 564	132	5,5	4	79					105	106	107	110	107	105	97							
PMM-Q 566	112	2,2	6	69				48	48	49	48	48	44									
PMM-Q 634	132	7,5	4	80							140	144	144	144	140	137	135	125				
PMM-Q 636	132	3	6	70							60	62	60	58	54							
PMM-Q 704	160	11	4	82								180	180	180	180	180	180	175	170	158		
PMM-Q 804	200	30	4	83									220	230	230	230	230	230	225	220	215	200

TOLLERANZA SULLA PORTATA ±5% - LOAD TOLERANCE ±5%

TOLLERANZA SULLA RUMOROSITÀ +3 dB(A) - NOISE TOLERANCE +3 dB(A)

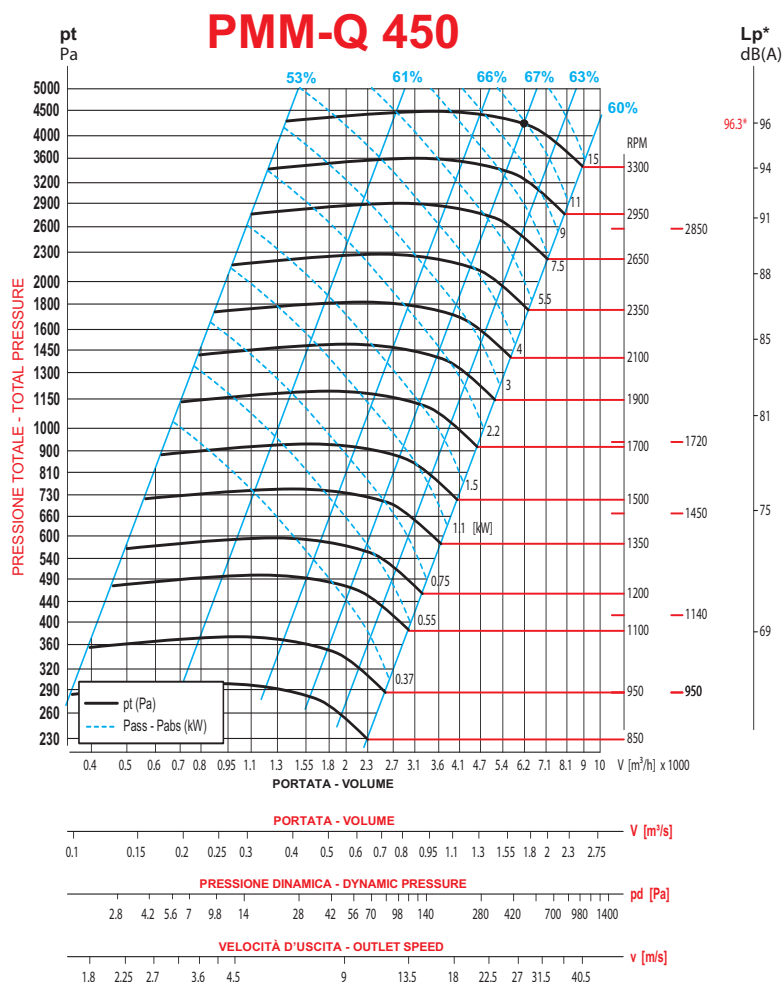
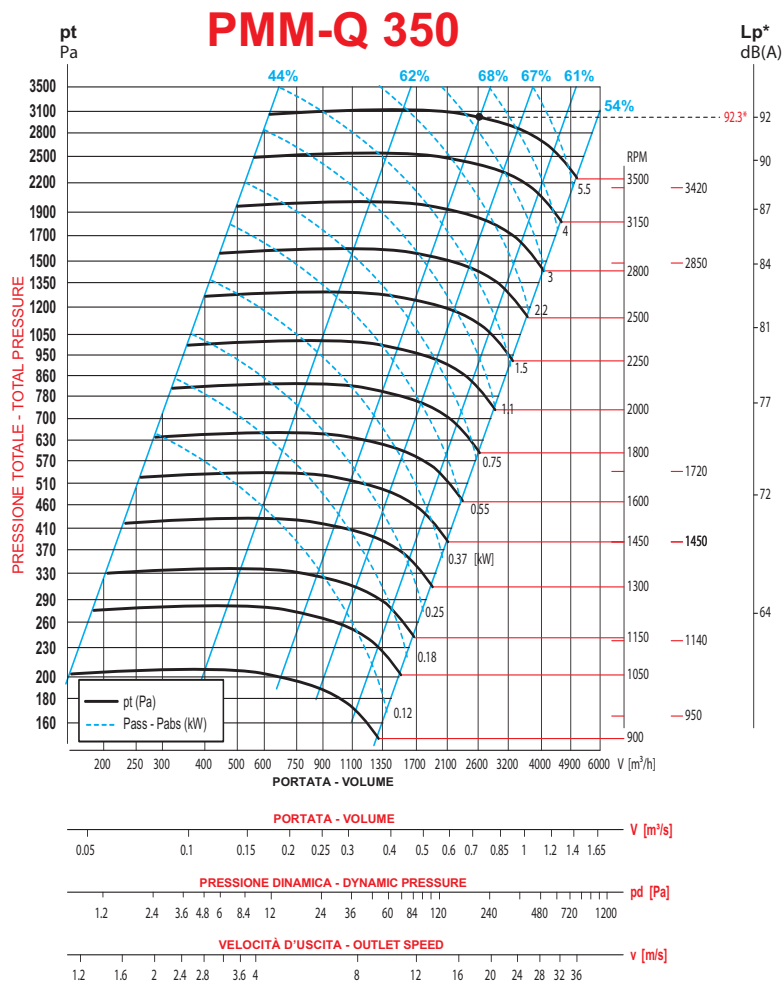
pt mmH2O= da Pa

Valori riferiti a:/ Datas referring to: T=15°C; P=1 atm

PMM-Q

PRESTAZIONI

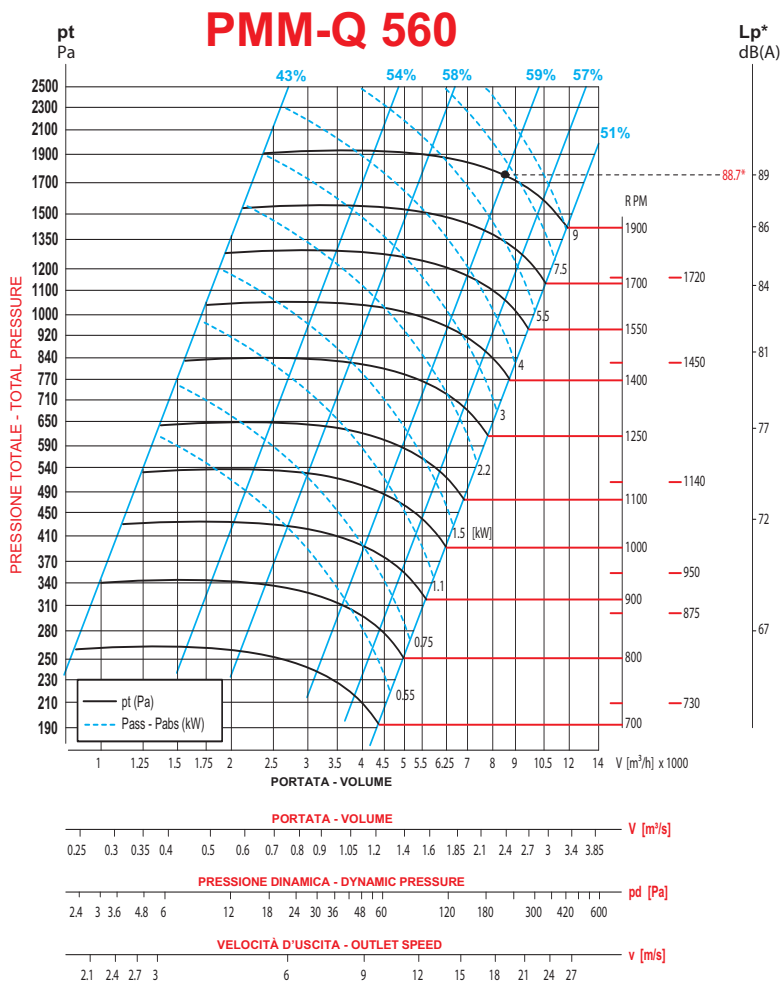
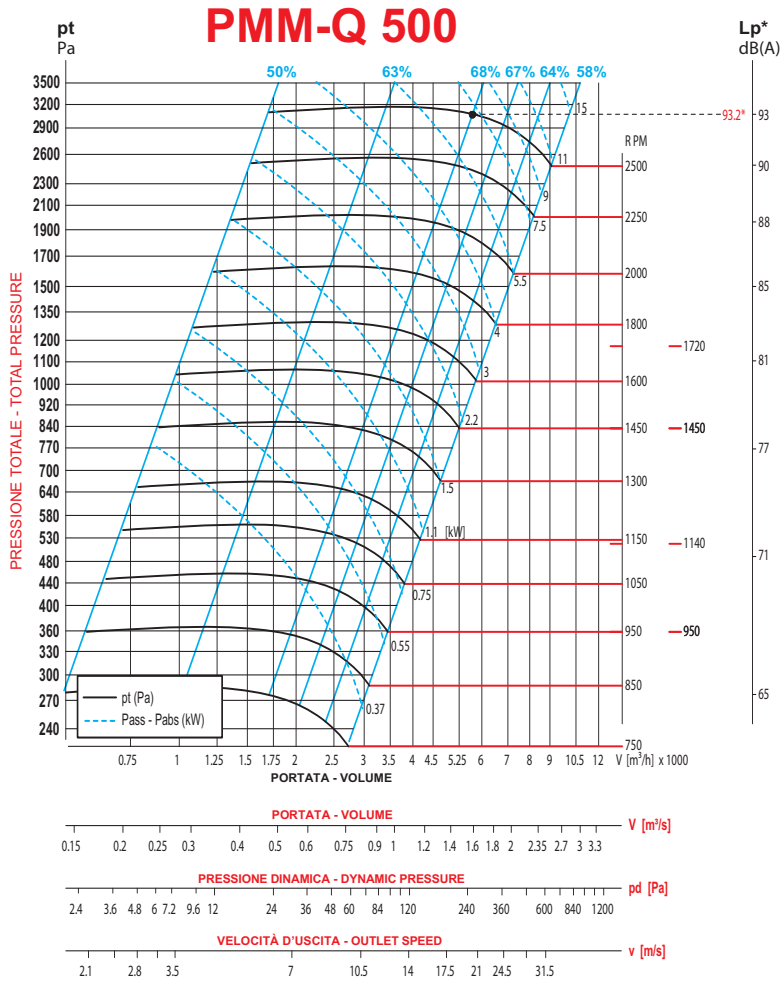
PERFORMANCES



PMM-Q

PRESTAZIONI

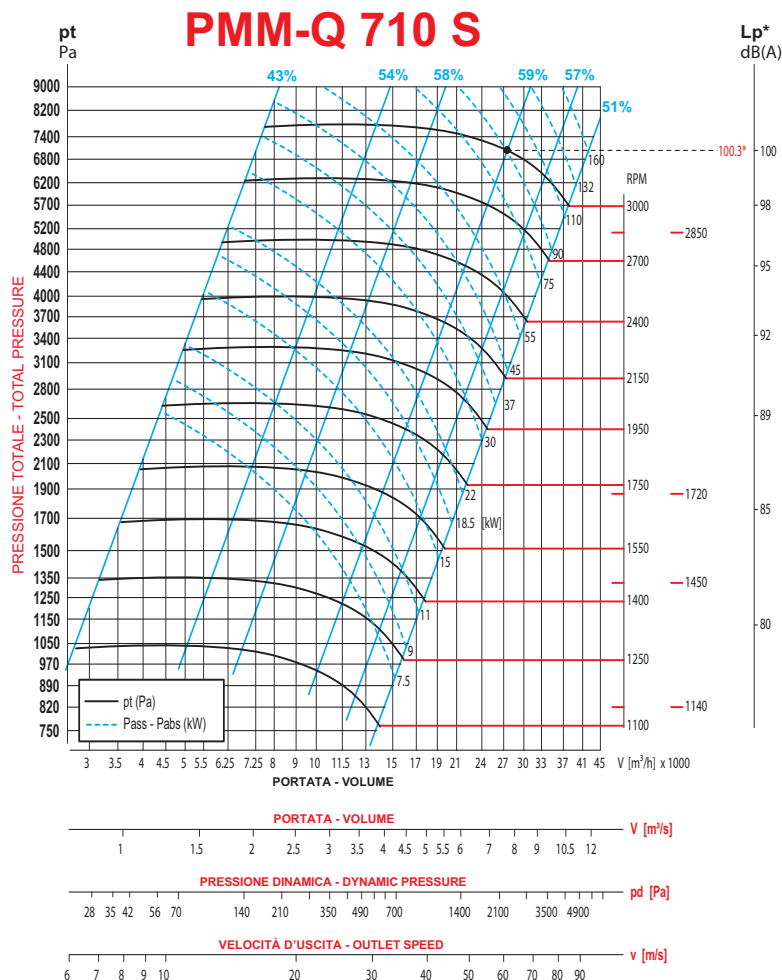
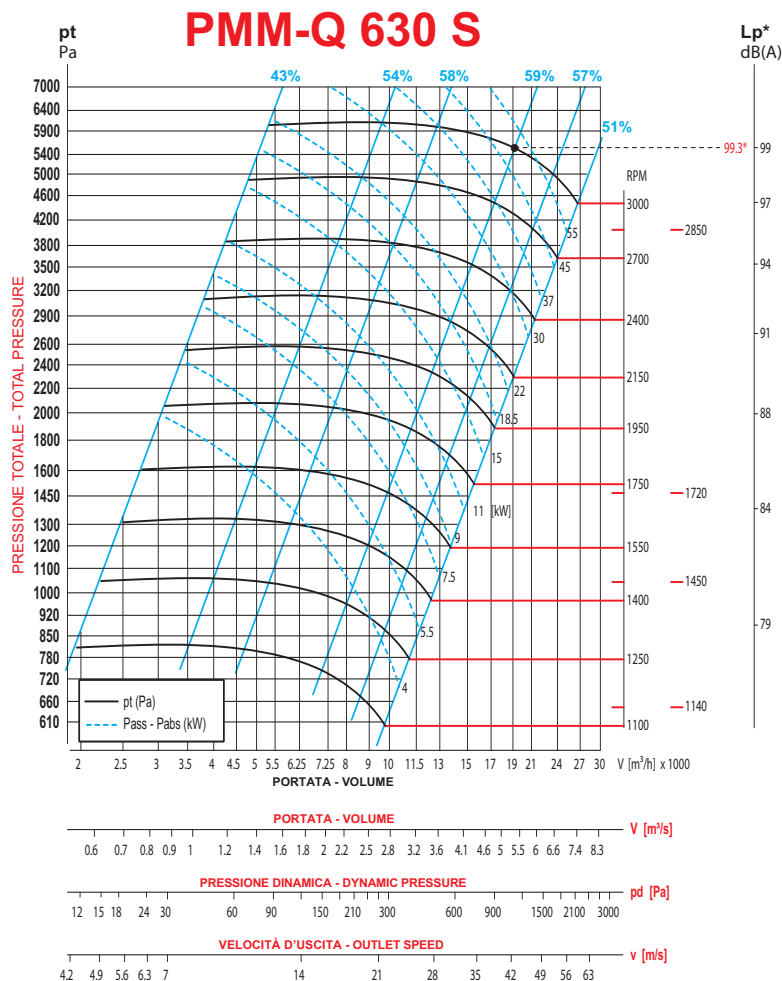
PERFORMANCES



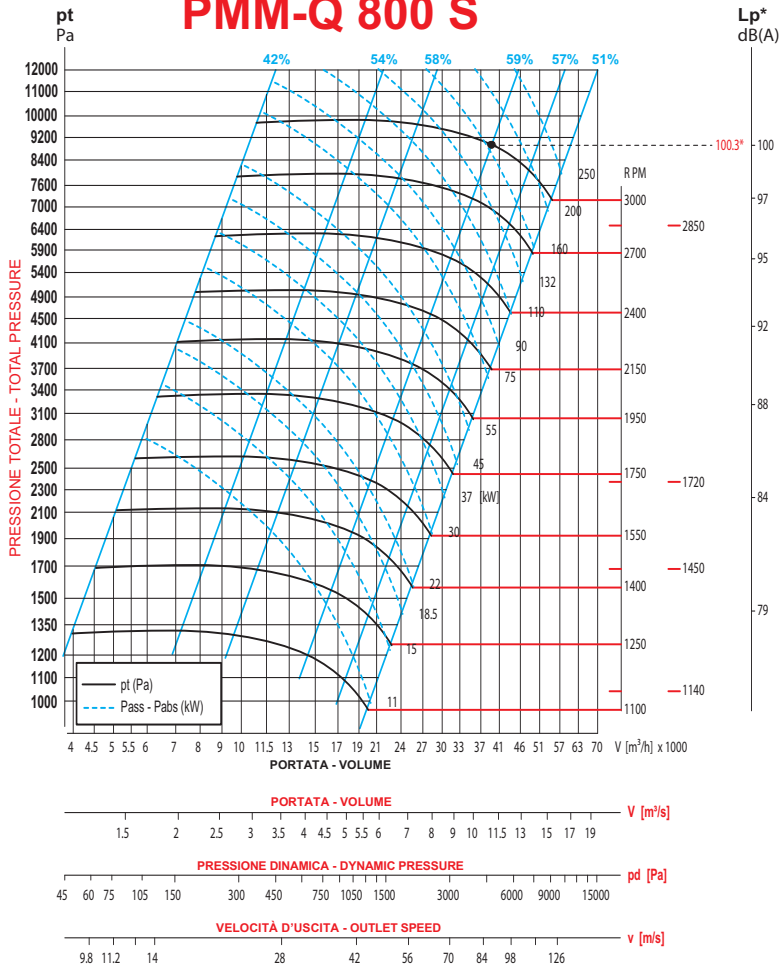
PMM-Q

PRESTAZIONI

PERFORMANCES



PMM-Q 800 S



PMM-Q

PRESTAZIONI

PERFORMANCES

