

# F

**VENTILATORE AD ALTO RENDIMENTO**  
HIGH EFFICIENCY FAN



**GIRANTE A PALE CURVE**  
CURVED BLADES IMPELLER



**VENTILATORI IN FUSIONE DI ALLUMINIO**  
ALUMINUM CAST FANS

**Portata/Flow rate:**  
**500 ÷ 7.200 m<sup>3</sup>/h**

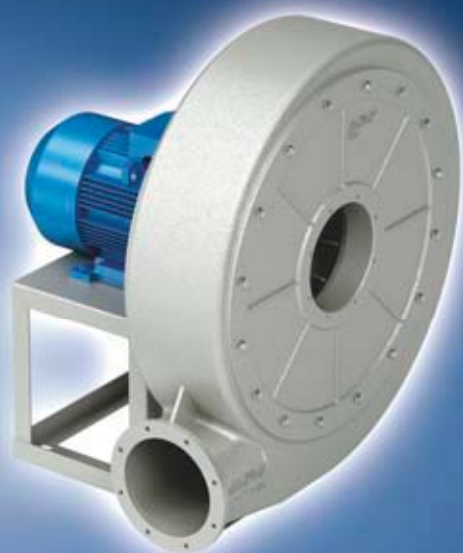
**Pressione/Pressure:**  
**120 ÷ 855 mm H<sub>2</sub>O**





# F

## ASPIRATORE VENTILATORE CENTRIFUGO CENTRIFUGAL FAN



### **Ventilatore: Mod. F**

**CAMPO DI LAVORO:** portate medio-basse. Pressioni alte.

**TIPO DI PALA:** giranti a pale curve, interamente realizzate in alluminio, ad elevata efficienza.

**APPLICAZIONI:** per il trasporto di aria pulita o leggermente polverosa, anche in caso di applicazioni in cui non sia consentito l'impiego di materiali standard per la presenza di fluidi corrosivi.

**TEMPERATURE DEL FLUIDO STANDARD:** fino a 80°C in esecuzione standard. Esecuzioni speciali sono disponibili per temperature più elevate.

**TIPO DI COSTRUZIONE:** chiocciola interamente realizzata in robuste fusioni di alluminio, garantisce una consistente resistenza meccanica abbinata ad un elevato smorzamento di vibrazioni e riduzione della rumorosità.

**DATI DI FUNZIONAMENTO:** condizioni dell'aria all'aspirazione T=20°C, 0m.s.l.m. e  $\rho=1.205 \text{ kg/m}^3$ .

**RUMOROSITÀ:** espressa in pressione sonora LpA [dB(A)] rilevata in campo libero con ventilatore canalizzato.

**ORIENTAMENTI:** n°8 RD (rotazione oraria vista lato trasmissione) e n°8 LG. Ventilatore in versione imbullonata orientabile per tutte le taglie.

**COSTRUZIONI SPECIALI:** versioni per alta temperatura, esecuzione in conformità alla direttiva ATEX.

**CLASSI GIRANTI:** le giranti sono costruite in Classe II e coprono l'intero funzionamento delle curve in condizioni di lavoro standard.

In condizioni di esercizio gravose e/o temperature elevate, si consiglia di contattare il servizio clienti MORO per conoscere la tipologia di girante più idonea.

### **Fan: Mod. F**

**FIELD OF OPERATION:** low-medium flow rates. High pressures.

**BLADE TYPE:** high efficiency curved blades impellers, manufactured with aluminum.

**APPLICATIONS:** suitable for clean or slightly dusty air with high required pressures, even for application for which standard materials use is not allowed because of corrosive agents.

**STANDARD FLUID TEMPERATURES:** moved fluids can reach temperatures up to 80°C. Special executions can be designed for higher temperatures.

**TYPE OF CONSTRUCTION:** entirely made up of strong aluminum cast, grants high mechanical resistance, joined by substantial vibrations and noise reduction.

**OPERATING SPECIFICATIONS:** condition of inlet air T=20°C, 0 m above sea level and  $\rho=1.205 \text{ kg/m}^3$ .

**NOISE LEVEL:** expressed as sound pressure level LpA [dB(A)] measured in free field with ducted fan.

**ORIENTATIONS:** No.8 RD (clockwise viewed from transmission side) and No.8 LG. Fan in bolted orientable version for every size.

**SPECIAL APPLICATIONS:** on demand, design according to ATEX 94/9/CE standards are available.

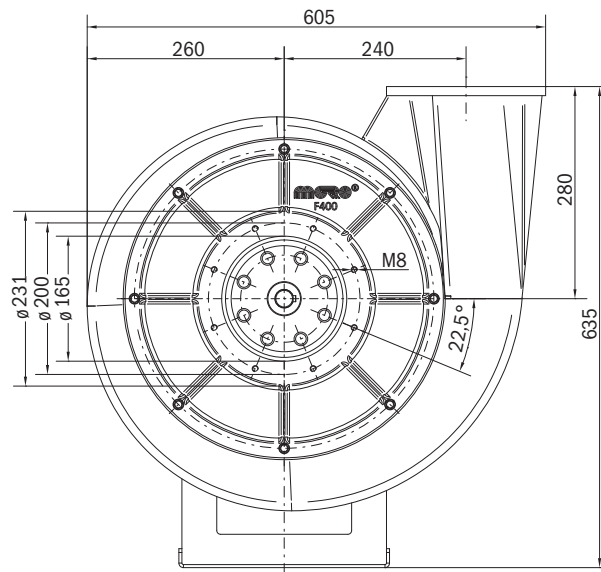
**IMPELLER CLASSES:** the impellers are made in Class II and cover the entire operating curves in standard work conditions.

In heavy-duty operating conditions and/or high temperatures, it is advisable to contact the MORO Customer Service to establish the most suitable type of impeller.

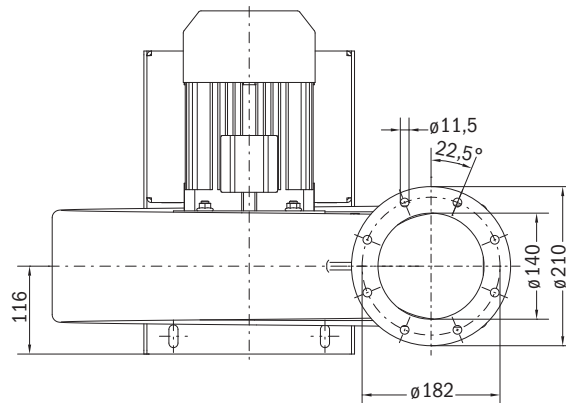




# F400 F400R



**Orientamento RDO**  
*RDO rotation sense*



## F400

**Potenza installata -**

Installed power:

**2.2 kW**

**Velocità di rotazione girante -**

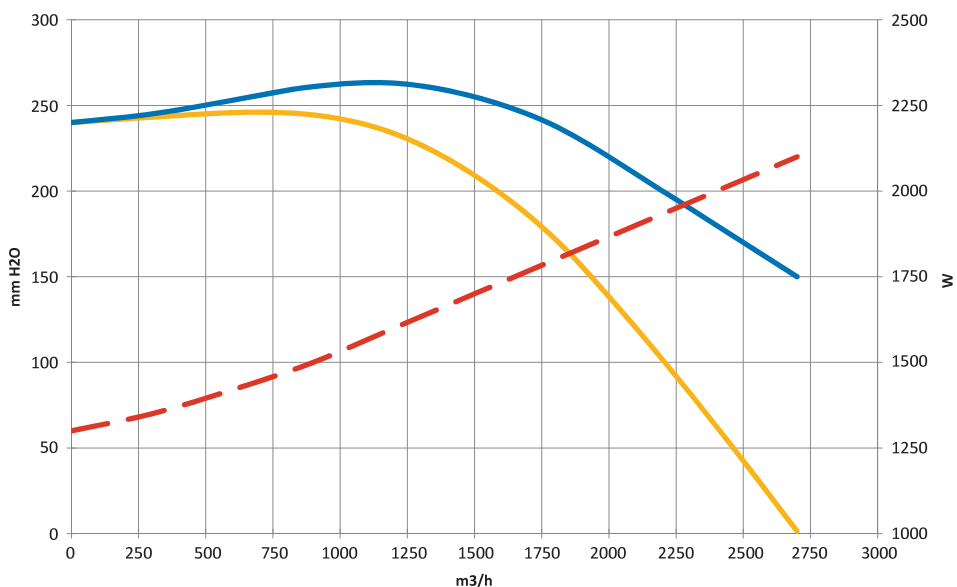
Impeller rotation speed:

**2920 rpm**

**Peso ventilatore -**

Blower weight:

**48 kg**

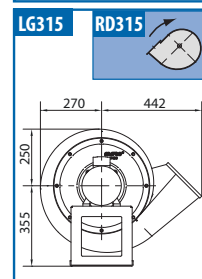
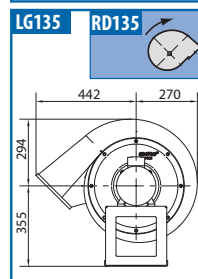
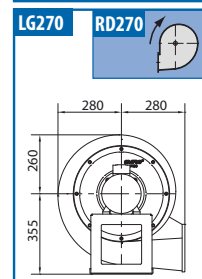
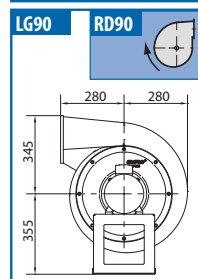
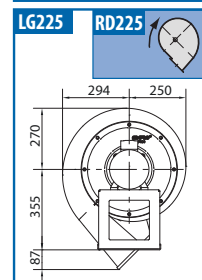
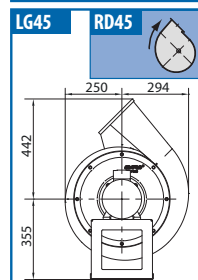
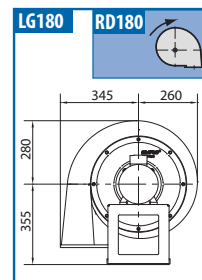
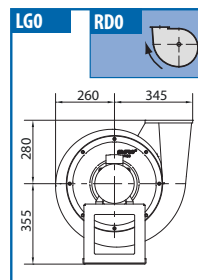
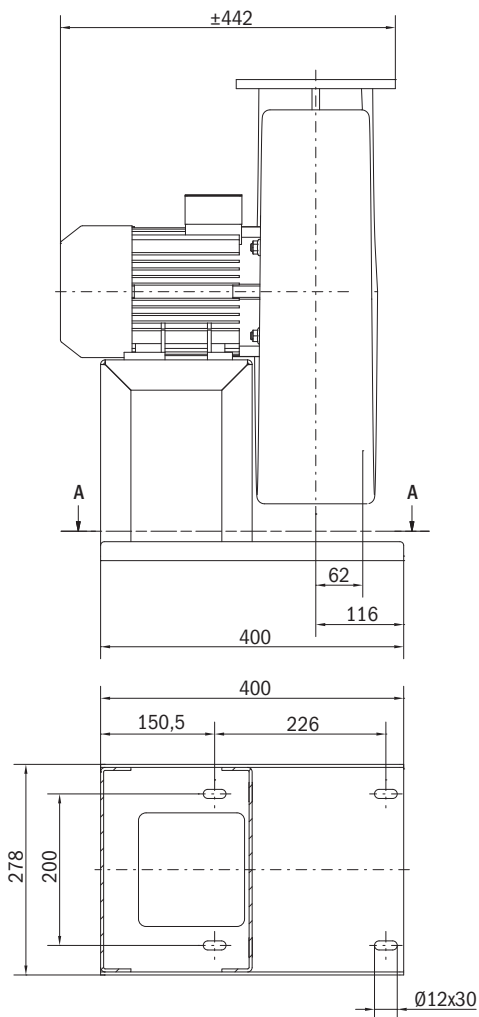


Valori riferiti a: / Datas referring to: **T=15°C; P=1 atm**

— Pt = Pressione totale - Total pressure    — Ps = Pressione statica - Statical pressure    - - - Pv = Potenza assorbita - Absorbed power



# F400 F400R



## F400R

**Potenza installata -**

Installed power:

**1.5 kW**

**Velocità di rotazione girante -**

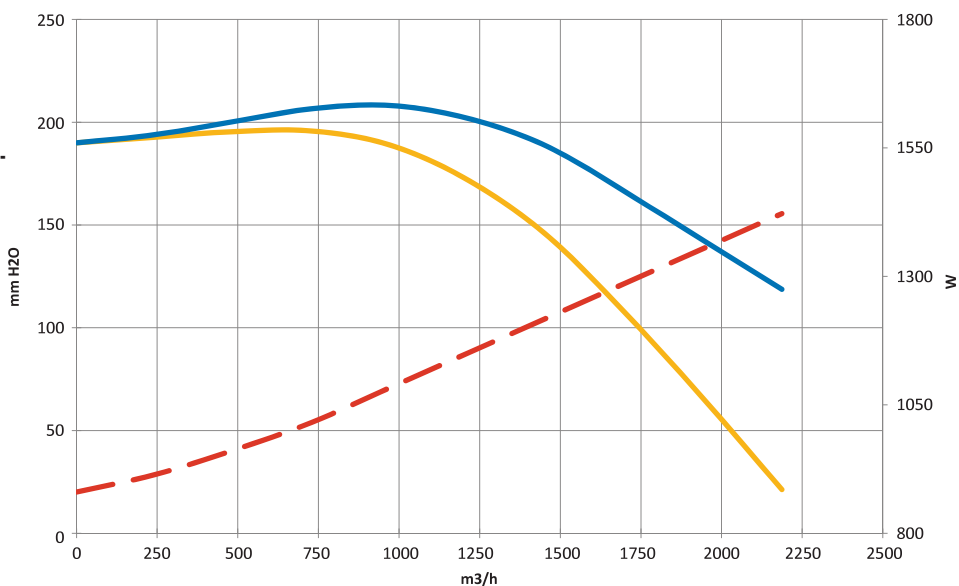
Impeller rotation speed:

**2920 rpm**

**Peso ventilatore -**

Blower weight:

**44 kg**

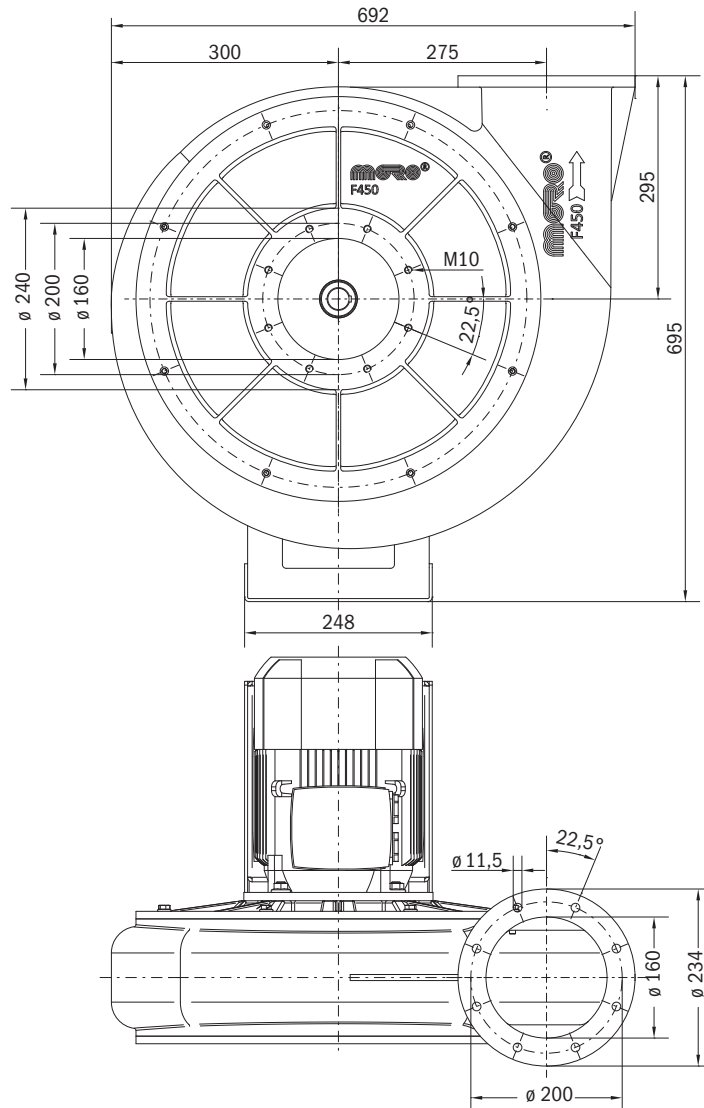


Valori riferiti a: / Datas referring to: **T=15°C; P=1 atm**

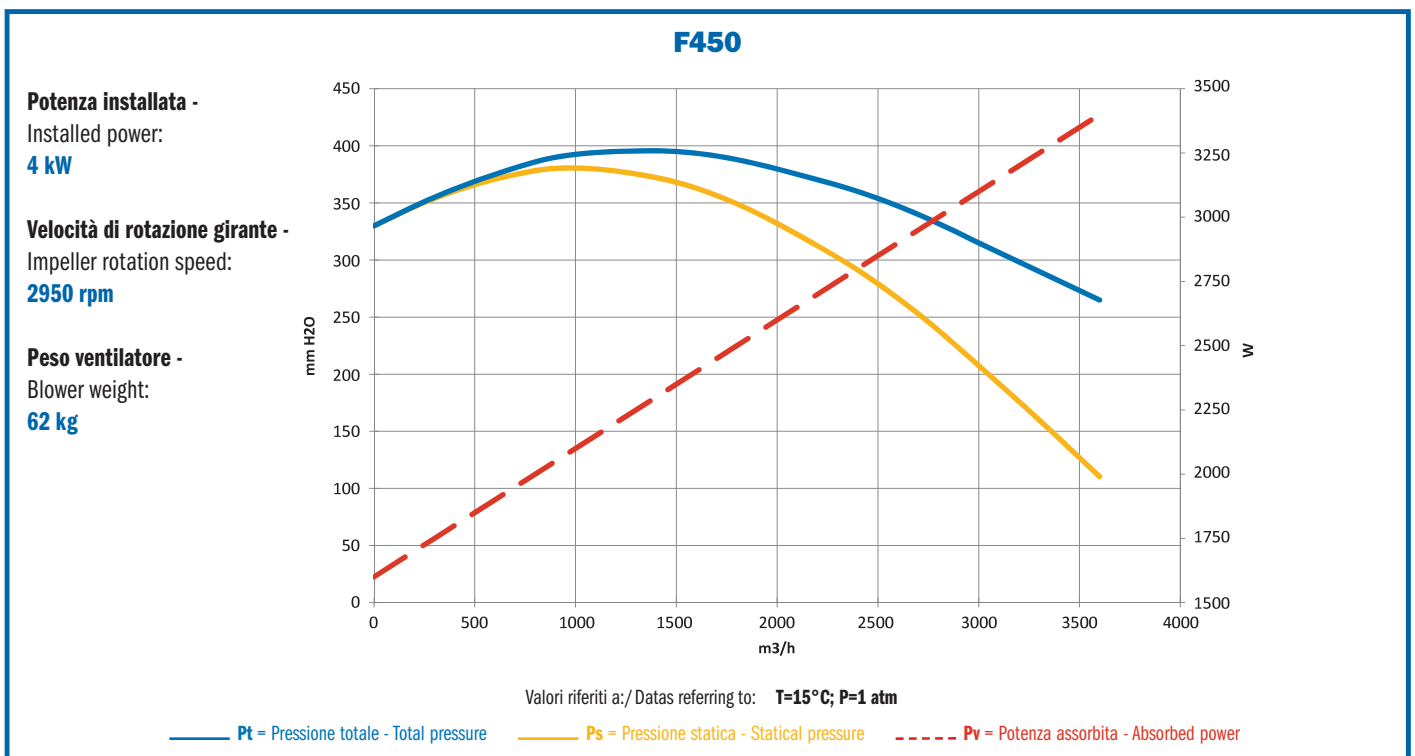
— Pt = Pressione totale - Total pressure    — Ps = Pressione statica - Statical pressure    - - - Pv = Potenza assorbita - Absorbed power



# F450 F450R

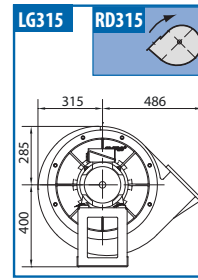
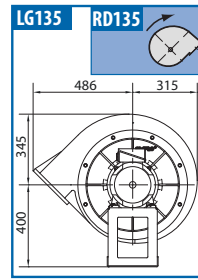
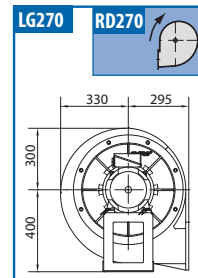
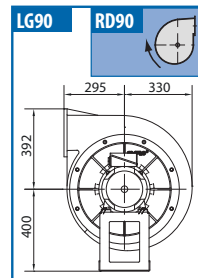
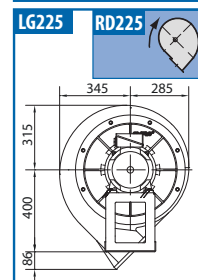
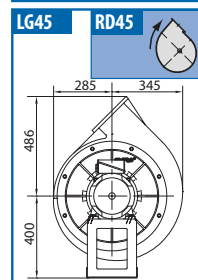
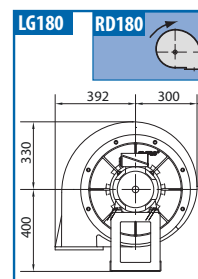
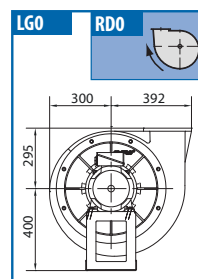
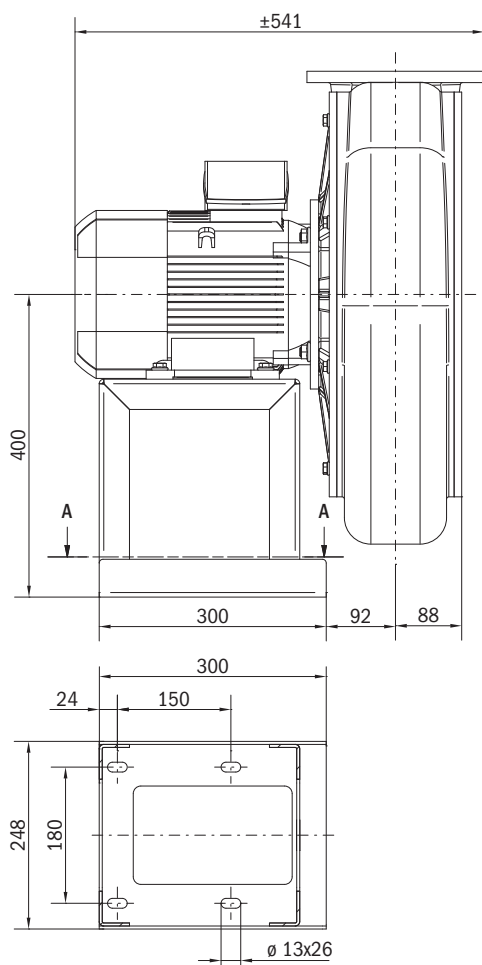


**Orientamento RDO**  
*RDO rotation sense*





# F450 F450R



## F450R

**Potenza installata -**

Installed power:

**3 kW**

**Velocità di rotazione girante -**

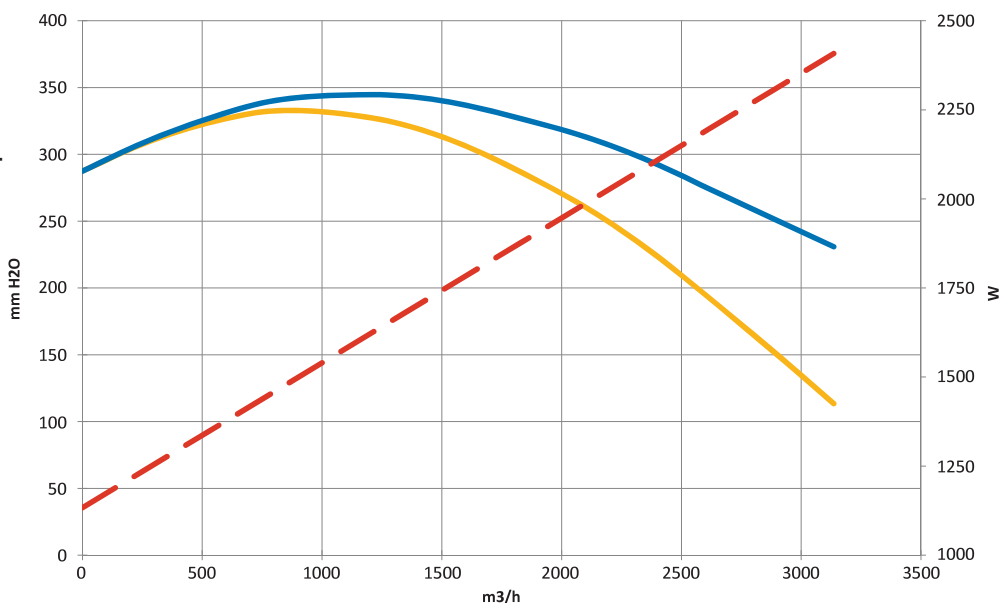
Impeller rotation speed:

**2950 rpm**

**Peso ventilatore -**

Blower weight:

**59 kg**



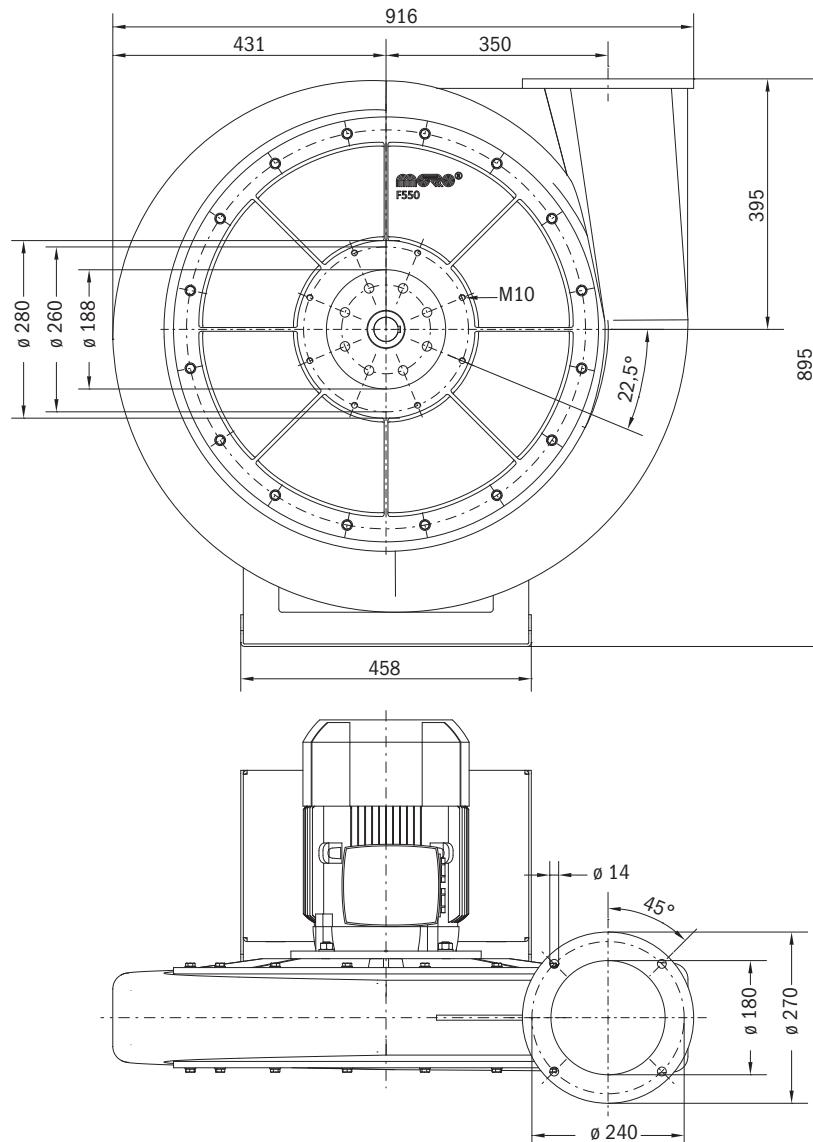
Valori riferiti a: / Datas referring to: **T=15°C; P=1 atm**

— **Pt** = Pressione totale - Total pressure    — **Ps** = Pressione statica - Statical pressure    - - - **Pv** = Potenza assorbita - Absorbed power

# DIMENSIONI DI INGOMBRO E PRESTAZIONI VENTILATORE

## OVERALL DIMENSIONS AND FAN PERFORMANCES

### F550



**Orientamento RDO**  
RDO rotation sense

### F550

**Potenza installata -**

Installed power:

**7.5 kW**

**Velocità di rotazione girante -**

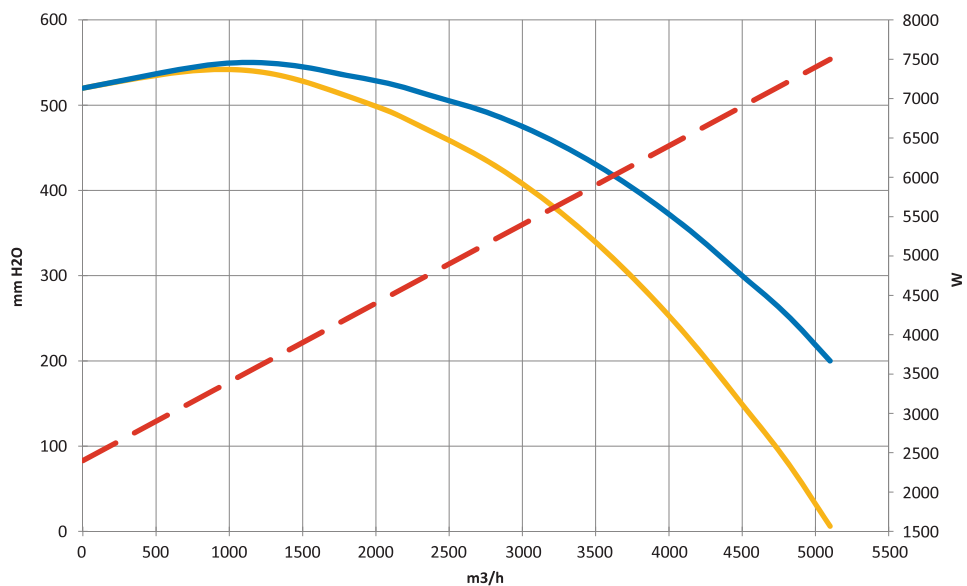
Impeller rotation speed:

**2950 rpm**

**Peso ventilatore -**

Blower weight:

**125 kg**



Valori riferiti a: / Datas referring to: **T=15°C; P=1 atm**

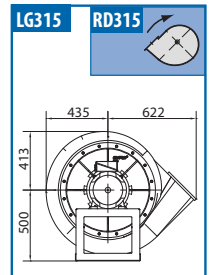
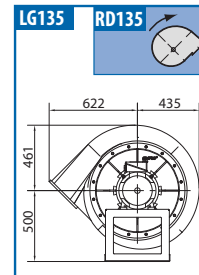
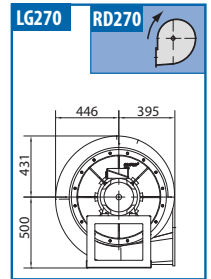
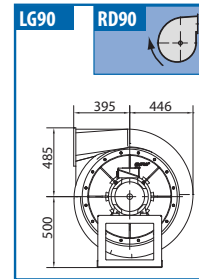
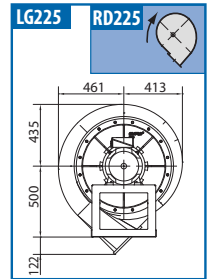
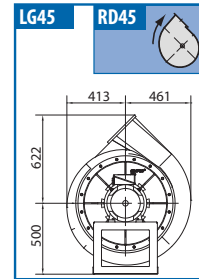
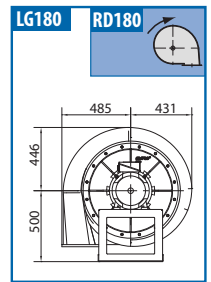
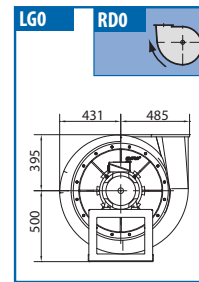
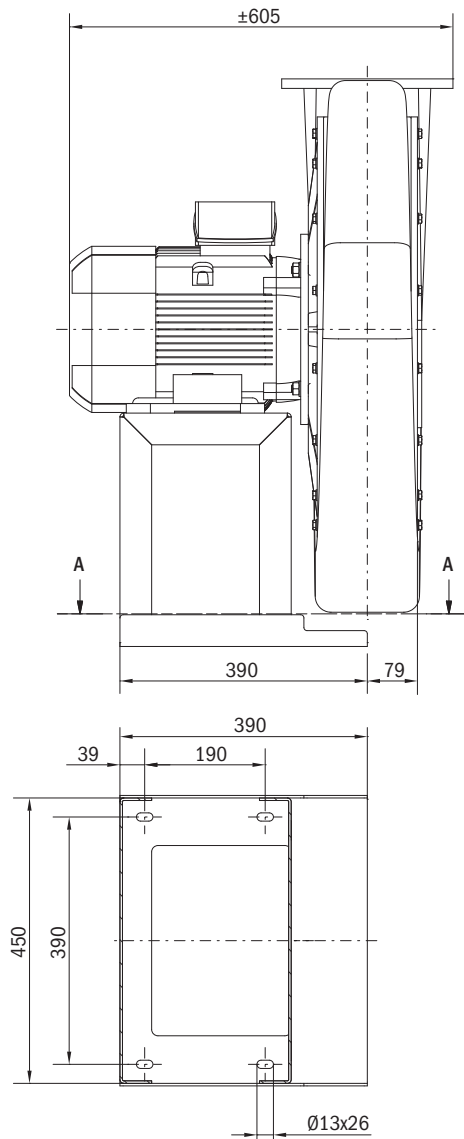
— Pt = Pressione totale - Total pressure    — Ps = Pressione statica - Statical pressure    - - - Pv = Potenza assorbita - Absorbed power



**DIMENSIONI DI INGOMBRO E PRESTAZIONI VENTILATORE**  
**OVERALL DIMENSIONS AND FAN PERFORMANCES**

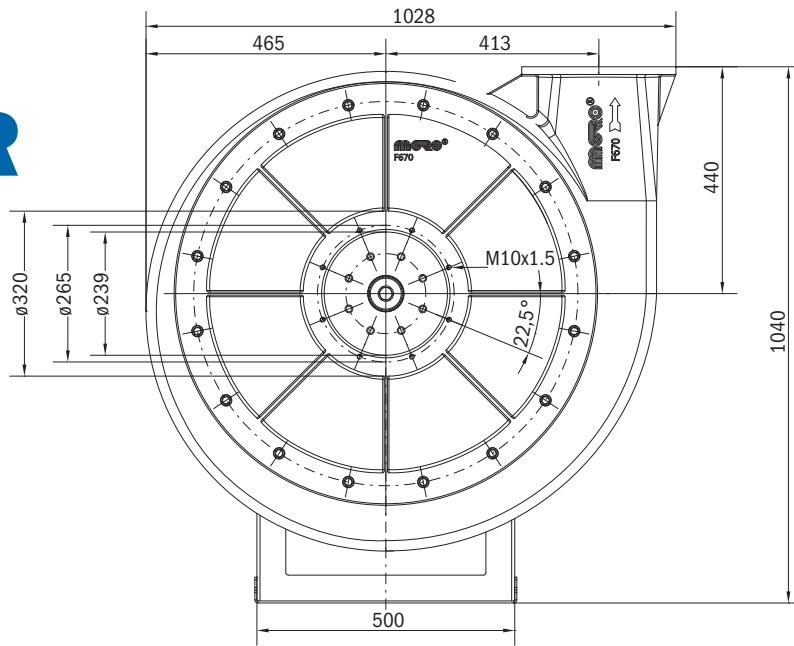


**F550**

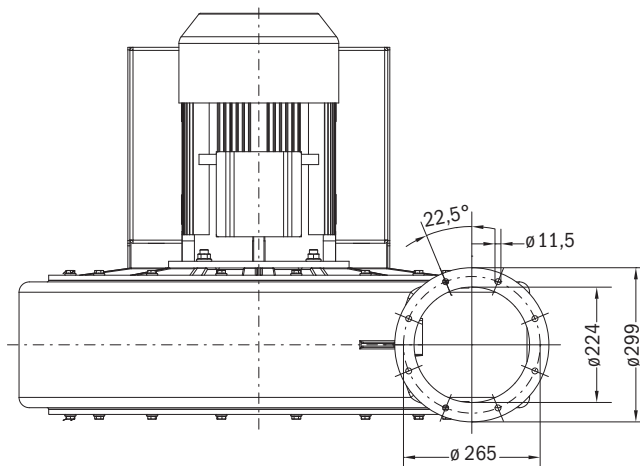




# F670 F670R



**Orientamento RDO**  
*RDO rotation sense*



## F670

**Potenza installata -**

Installed power:

**18.5 kW**

**Velocità di rotazione girante -**

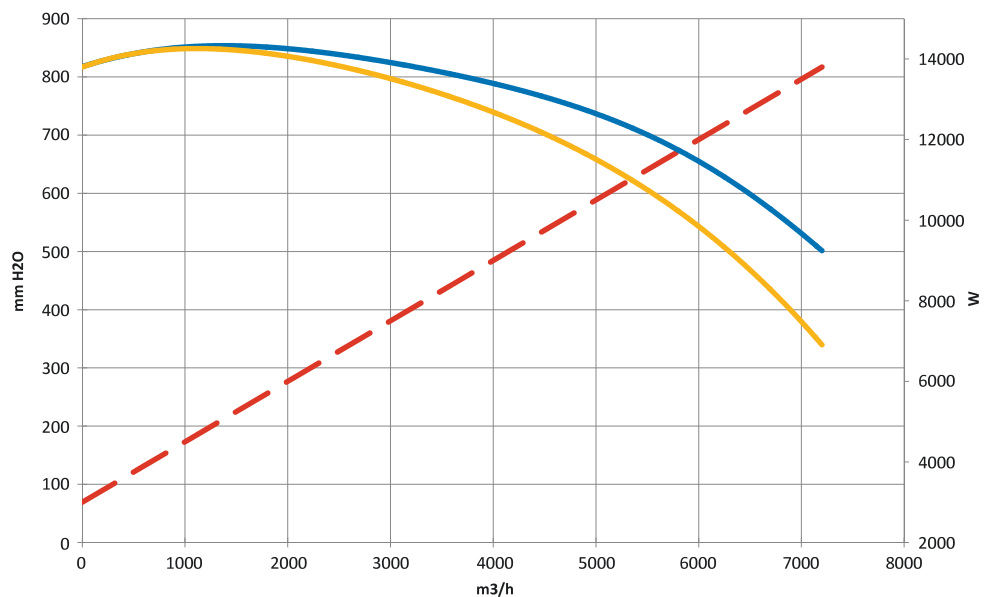
Impeller rotation speed:

**2950 rpm**

**Peso ventilatore -**

Blower weight:

**158 kg**

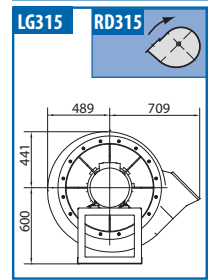
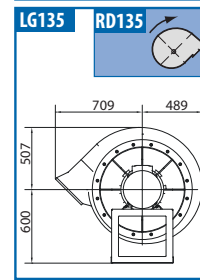
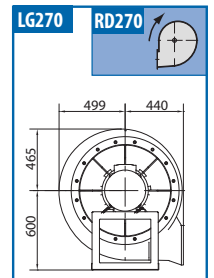
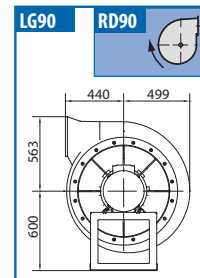
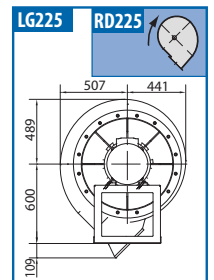
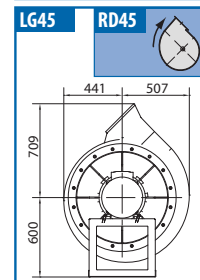
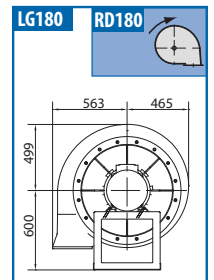
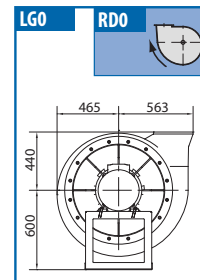
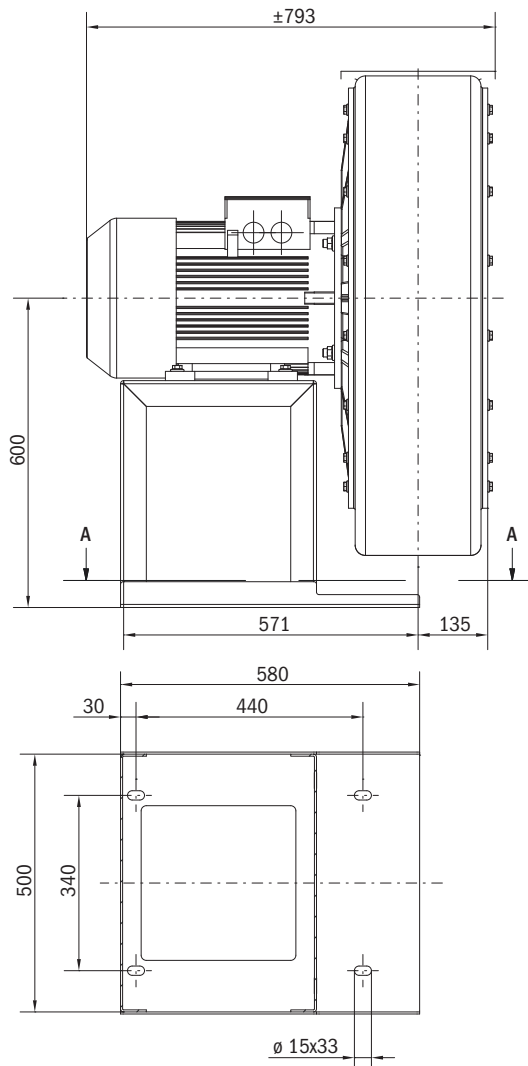


Valori riferiti a: / Datas referring to: **T=15°C; P=1 atm**

— Pt = Pressione totale - Total pressure    — Ps = Pressione statica - Statical pressure    - - - Pv = Potenza assorbita - Absorbed power



# F670 F670R

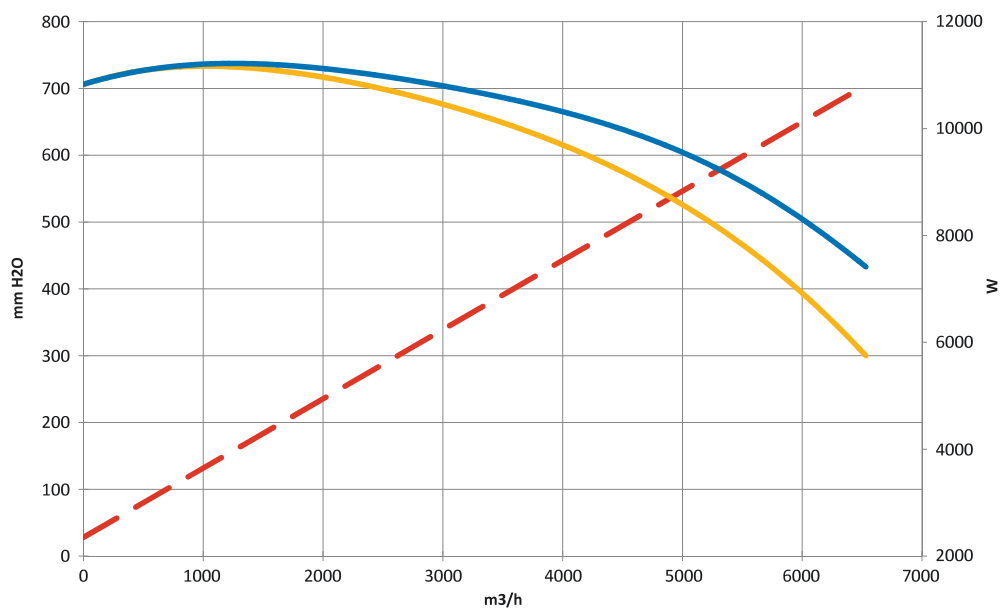


## F670R

**Potenza installata -**  
 Installed power:  
**15 kW**

**Velocità di rotazione girante -**  
 Impeller rotation speed:  
**2950 rpm**

**Peso ventilatore -**  
 Blower weight:  
**151 kg**



Valori riferiti a: / Datas referring to: **T=15°C; P=1 atm**

— Pt = Pressione totale - Total pressure    — Ps = Pressione statica - Statical pressure    - - - Pv = Potenza assorbita - Absorbed power

Modello	P Inst [kW]	Motore	rpm	LpA [dB(A)]	Q [m <sup>3</sup> /h]																					
					0	300	600	900	1200	1500	1800	2100	2400	2700	3000	3300	3600	3900	4200	4500	4800	5100	5400	6000	6600	7200
<b>F400R</b>	1,5	90	2920	83	190	196	206	209	202	184	153	120														
<b>F400</b>	2,2	90	2920	85	240	245	253	261	263	255	238	210	180	150												
<b>F450R</b>	3	100	2920	84	287	312	341	340	344	340	330	315	295	258	236											
<b>F450</b>	4	112	2950	86	330	355	375	390	395	395	388	375	360	340	315	290	265									
<b>F550</b>	7,5	132	2950	90	520	530	540	548	550	545	535	525	510	495	475	450	420	385	345	300	255	200				
<b>F670R</b>	15	160	2960	94	708	721	728	736	740	739	736	727	718	708	701	694	685	676	658	633	608	598	566	508	428	
<b>F670</b>	18,5	160	2960	96	820	830	840	850	855	855	855	848	840	830	820	812	805	795	785	770	750	730	700	655	590	500